

# DAILY RESEARCH, 13 AGUSTUS 2020

**PT PROFINDO SEKURITAS INDONESIA**

**GD PERMATA KUNINGAN LT 19  
JL KUNINGAN MULIA KAV 9C GUNTUR SETIABUDI JAKARTA SELATAN 12980**

**TELP +62 21 8378 0888**

**EMAIL : CUSTOMERSERVICE@PROFINDO.COM**

**WWW.PROFINDO.COM | PROCLICK.PROFINDO.COM**

# MARKET MOVERS



Bursa saham AS ditutup menguat didorong kenaikan saham sector teknologi. **DOW +1.04%, S&P +1.40%, NASDAQ +2.13%**

Bursa saham Eropa ditutup mixed setelah data pertumbuhan ekonomi Inggris mengalami kontraksi terburuk akibat Covid 19. **Indeks DAX +0.86%, FTSE +2.04%, CAC +0.90%**

Bursa Saham Asia dibuka menguat seiring penguatan saham Wallstreet. **Hang Seng +1.42%, KOSPI +0.63%, Nikkei +1.64%**

Harga minyak mentah dunia melemah dikarenakan belum pulihnya permintaan global ditengah covid 19. Harga emas melemah tipis setelah kekhawatiran akan pemulihan ekonomi global yang diperkirakan masih akan slowdown. **WTI -0.26%, Brent Oil -0.04%, Gold -0.05%.**

IHSG pada perdagangan hari ini diperkirakan akan **BULLISH** dengan Range pergerakan **5157-5278** dengan saham-saham yang dapat diperhatikan : **TLKM UNVR JSMR MNCN BJBR TOWR**

# MARET DATA

## AMERIKA

DOW 30	27,976.84	+289.93	+1.05%
S&P 500	3,380.35	+46.66	+1.40%
NASDAQ	11,012.24	+229.42	+2.13%

## EUROPE

DAX	13,058.63	+111.74	+0.86%
FTSE 100	6,280.12	+125.78	+2.04%
CAC 40	5,073.31	+45.32	+0.90%

## ASIA

SHANGHAI	3,328.18	+8.91	+0.27%
HANGSENG	25,244.02	+353.34	+1.42%
SET	1,336.84	+14.83	+1.12%
KOSPI	2,447.67	+15.32	+0.63%
JCI	5,233.45	+43.29	+0.83%
NIKKEI	23,219.50	+375.54	+1.64%
ASX	6,100.40	-31.60	-0.52%

## COMMODITIES

GOLD	1,948.05	-0.95	-0.05%
WTI OIL	42.56	-0.11	-0.26%
BRENT OIL	45.30	-0.02	-0.04%
COAL	51.95	-0.86	-1.61%
PALM OIL	2880	+60	+2.13%
TINS	17,547.50	+12.50	+0.07%
NICKEL	14,230.00	-2.50	-0.02%

# EVENT & ECONOMIC CALENDER

## ECONOMIC CALENDER :

### INDONESIA

100820 CURRENT ACCOUNT Q2  
110820 RETAIL SALES YoY (JUN)

### GLOBAL

100820 CHINA INFLATION RATE YoY (JUL)  
CHINA PPI YoY (JUL)  
US JOBS OPENING (JUN)

110820 JAPAN CURRENT ACCOUNT (JUN)  
JAPAN BANK LENDING YoY (JUL)  
US PPI MoM (JUL)  
US CORE PPI YoY (JUL)

120820 US API CRUDE OIL CHANGE  
GBP TRADE BALANCE (JUN)  
GBP GDP GROWTH RATE YoY (Q2)  
GBP MANUFACTURING PRODUCTIONS (JUN)  
EUROPE INDUSTRIAL PRODUCTION (JUN)  
US CORE INFLATION

130820 CHINA FDI (YTD) JUL  
JAPAN PPI MoM (JUL)  
GERMANY INFLATION RATE YoY (JUL)  
SPAIN INFLATION RATE YoY (JUL)  
US JOBS CLAIMS

140820 CHINA INDUSTRIAL PRODUCTION YoY (JUL)  
CHINA RETAIL SALES YoY (JUL)  
CHINA UNEMPLOYMENT RATE YoY (JUL)  
KOREA EXPORT IMPORT YoY (JUL)  
FRANCE INFLATION RATE (JUL)  
EUROPE GDP GROWTH Q2  
EUROPE TRADE BALANCE (JUN)  
US RETAIL SALES MoM (JUL)  
US MANUFACTURING PRODUCTIONS YoY (JUL)

## CORPORATE ACTION :

### DEVIDEN

100820 TPMA RP 23.5 (CUM 1008, PAYMENT 0309)  
SLIS RP 0.75 (CUM 1008, PAYMENT 0309)  
IFII RP 2 (CUM 1008, PAYMENT 0209)  
CTRA RP 8 (CUM 1008, PAYMENT 0309)

130820 SMBR RP 0.62007 (CUM 1308, PAYMENT 0409)  
ACES RP 18.1 (CUM 1308, PAYMENT 0409)

### RUPS

100820 PTSN OPMS INPC ECII BESS ASJT

110820 RISE RDTX PORT MARK KPIG BMTR APLI

120820 TNCA SMRA SMMT SCMA OCAP MREI MPOW MOLI HRTA HERO GEMS  
FAST EMTK BWPT BBLD AKSI

130820 WICO TARA SDRA PTIS MORE OKAS LMSH LION LEAD JAST HOTL GSMF  
DEWA CSIS BHAT BAYU ALTO ALDO

140820 YPAS WOOD TBLA SWAT SONA RALS PYFA PTSP MIRA MICE MGNA MFIN  
GJTL GGRP FREN CBMF BUDI BTEK BKDP BEST ALKA

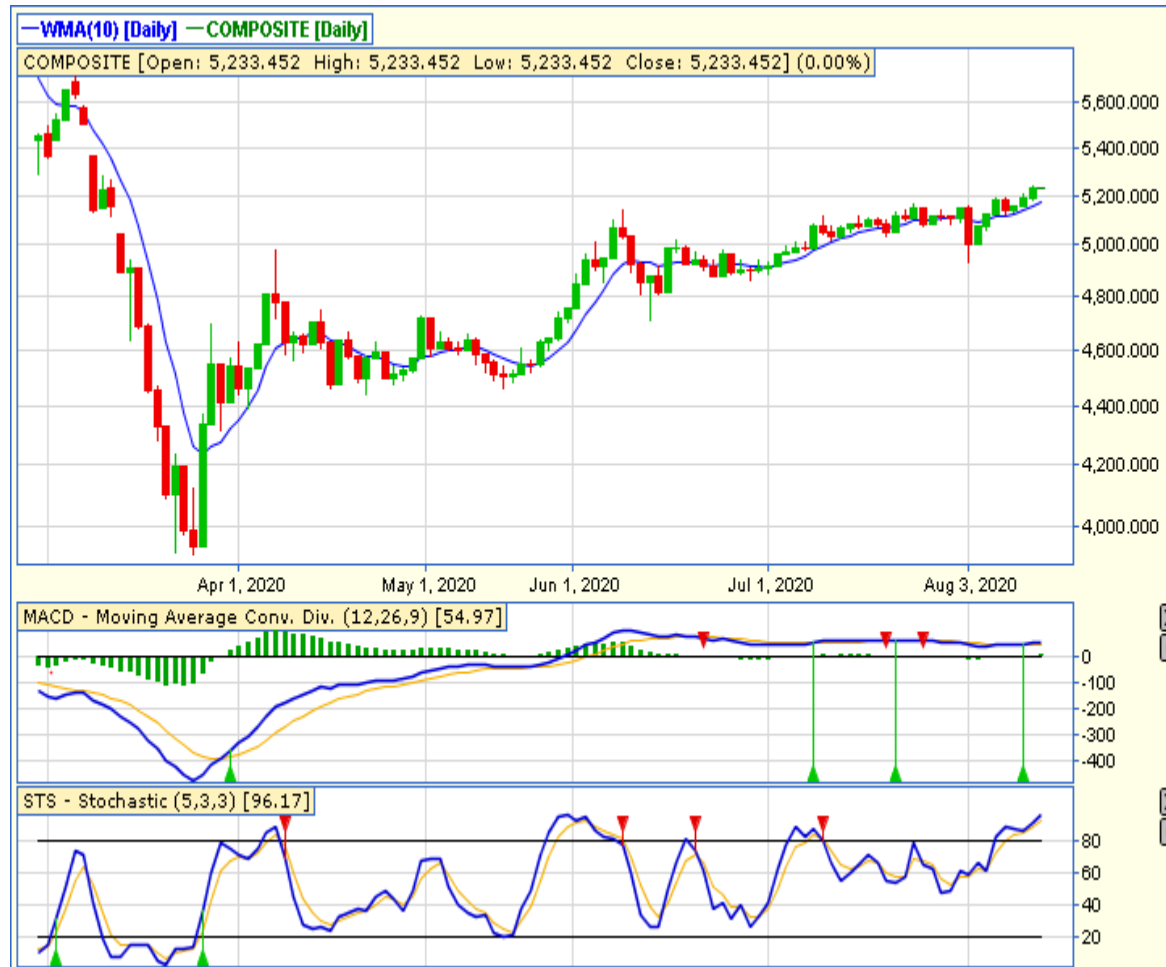
### IPO

100820 SGER – PT SUMBER GLOBAL ENERGY TBK RP 108

### RIGTH ISSUE

IMJS RATIO 1:2 RP 230 (CUM 1008, TRADING PERIOD 1408-2508)

# JAKARTA COMPOSITE INDEX



## PREVIOUS 12 AGUSTUS 2020

CLOSING	5233.452	+0.834%
TRANSACTION	IDR 11.35TRILLION	
FOREIGN NETT	IDR 142 BIO (BUY)	

## PREDICTION 12 AGUSTUS 2020

**BULLISH**  
**RANGE 5157-5278**

BREAK OUT RISING WEDGE  
STOCHASTIC : UPTREND  
MACD : HISTOGRAM POSITIF DAN UPTREND

# TECHNICAL RECOMENDATION



## TLKM – PT TELEKOMUNIKASI INDONESIA (PERSERO) TBK

CLOSING 12/8/2020 RP 2950 (+0.7%)

**ACCUM BUY 2900-3000**

**TARGET PRICE 3300**

**STOPLOSS < 2900**

BULLISH HARAMI

STOCHASTIC : OVERSOLD

MACD : HISTOGRAM NEGATIF MENGECIL DAN  
LOWER AREA

# TECHNICAL RECOMENDATION



**UNVR – PT UNILEVER INDONESIA TBK**

**CLOSING 12/8/2020 RP 8050 (+0%)**

**BUY**

**TARGET PRICE 8500**

**STOPLOSS < 8000**

**SPINNING**

**STOCHASTIC : OVERSOLD**

**MACD : HISTOGRAM NEGATIF DAN DOWNTREND**

# TECHNICAL RECOMENDATION



## JSMR – PT JASA MARGA (PERSERO) TBK

CLOSING 12/8/2020 RP 4120 (+1.7%)

**BUY**

**TARGET PRICE 4450**

**STOPLOSS < 4060**

DOUBLE BUTTOM

STOCHASTIC : OVERSOLD

MACD : HISTOGRAM NEGATIF MENGECIL DAN  
BERSIAP GOLDEN CROSS



# TECHNICAL RECOMENDATION



**MNCN – PT MEDIA NUSANTARA CITRA TBK**

CLOSING 12/8/2020 Rp 955 (+8.5%)

**SELL ON STRENGTH  
TAKE PROFIT 1000**

BREAK OUT CUP & HANDLE  
STOCHASTIC : NETRAL DIUPPER AREA  
MACD : HISTOGRAM POSITIF DAN UPTREND

# TECHNICAL RECOMENDATION



**BJBR – PT BPD JAWA BARAT DAN BANTEN TBK**

**CLOSING 12/8/2020 RP 960 (+3.2%)**

**SELL ON STRENGTH  
TAKE PROFIT 1040**

**DOJI  
STOCHASTIC : OVERSOLD  
MACD : HISTOGRAM NEGATIF DAN  
DOWNTREND**

# TECHNICAL RECOMENDATION



**TOWR – PT SARANA MENARA NUSANTARA TBK**

**CLOSING 12/8/2020 RP 1090(+1.9%)**

**BUY**

**TARGET PRICE 1180**

**STOPLOSS < 1065**

**WHITE CANDLE**

**STOCHASTIC : GOLDEN CROSS**

**MACD : HISTOGRAM NEGATIF MENGECIL DAN BERSIAP GOLDEN CROSS**

# RESEARCH TEAM



**YULIANA**

**RESEARCH ANALYST &  
CORPORATE FINANCE**



**DIMAS WP PRATAMA, CSA**

**TECHNICAL ANALYST**

# EQUITY CAPITAL MARKET TEAM



**JESSIE JAMES**

**HEAD OF EQUITY SALES**



**PRASETYO NUGROHO**

**HEAD OF DEALING ROOM**



**GABRIELLA PRATIWY**

**HEAD OF ONLINE TRADING**